



AVON | WEST
STRATFORD

The Geddes

Square Footage: 1,888

Bedrooms: 3

Bathrooms: 2.5

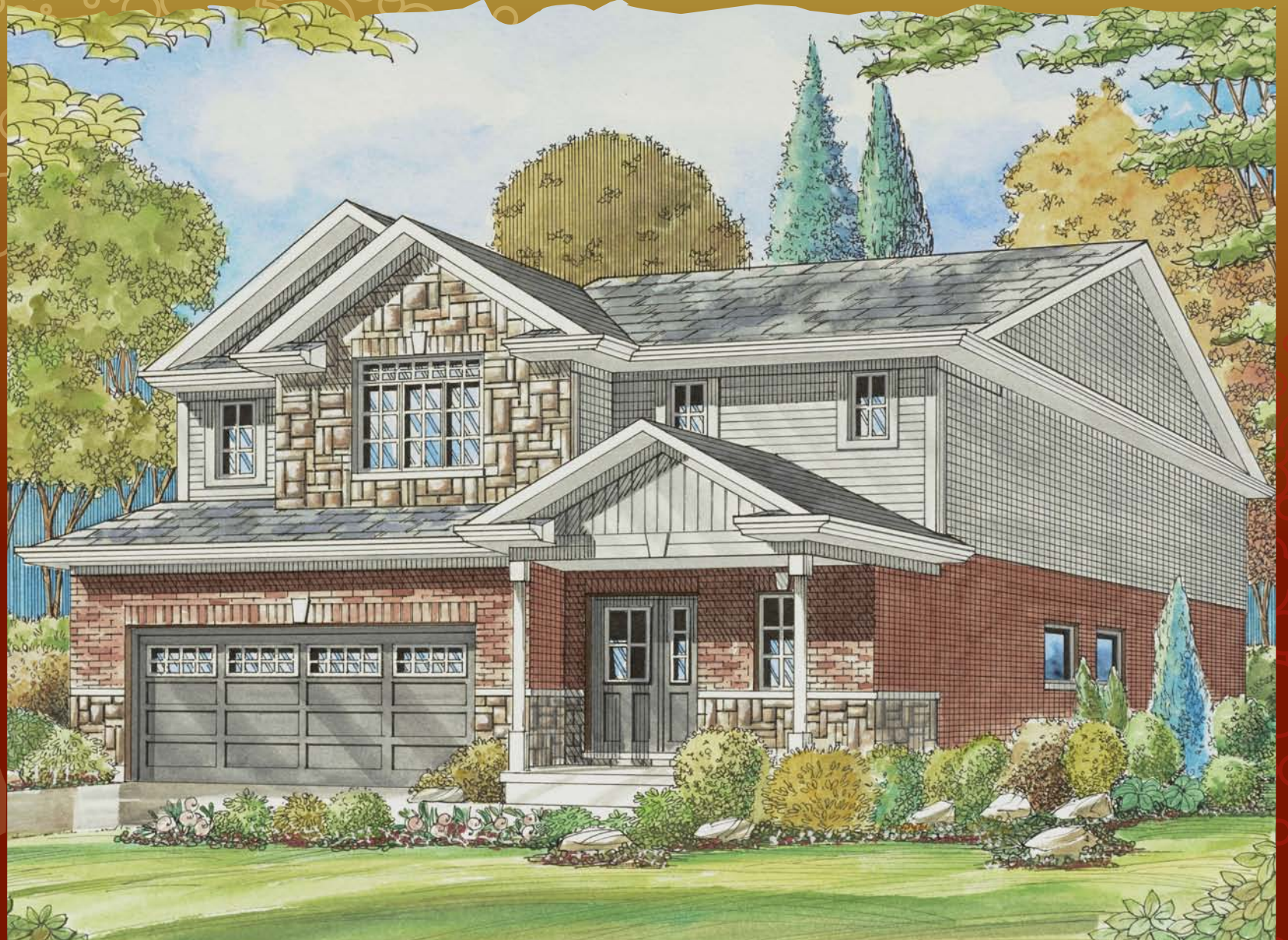
Storeys: 2

Lot Width: 40 ft.

3 bedroom, 2 Storey, 2 1/2 baths,
single garage door, main floor laundry,
oversized great room & all upper floor
bedrooms have W.I.C.'s.

**Bromberg
Homes**

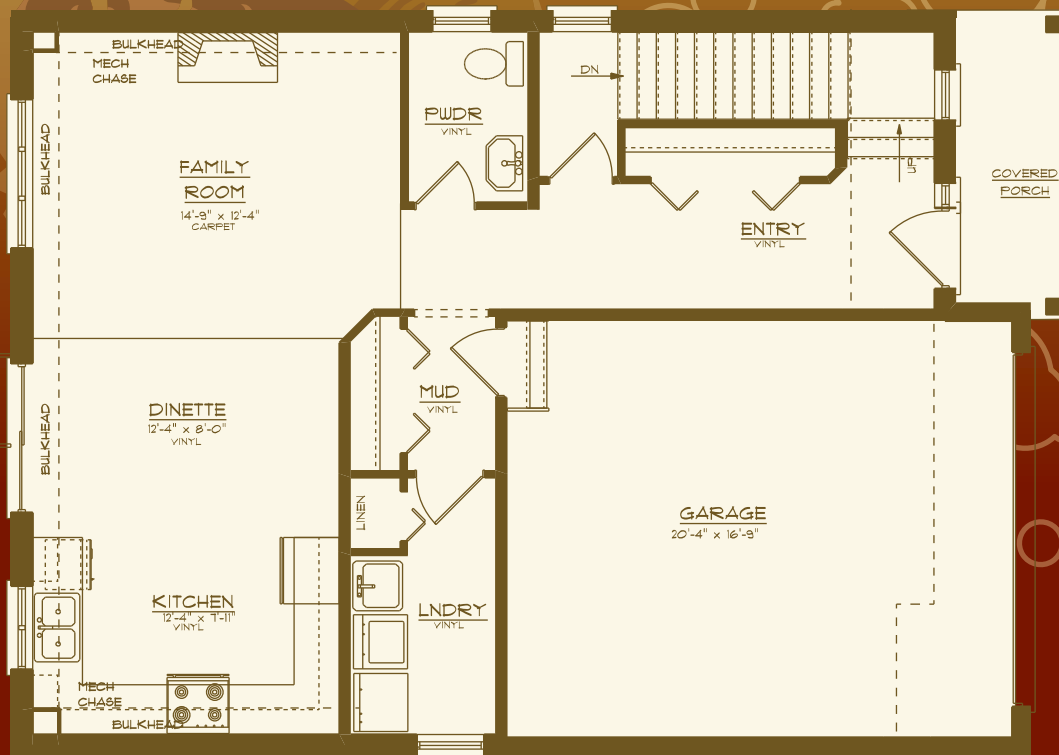
Division of Werner Bromberg Ltd.



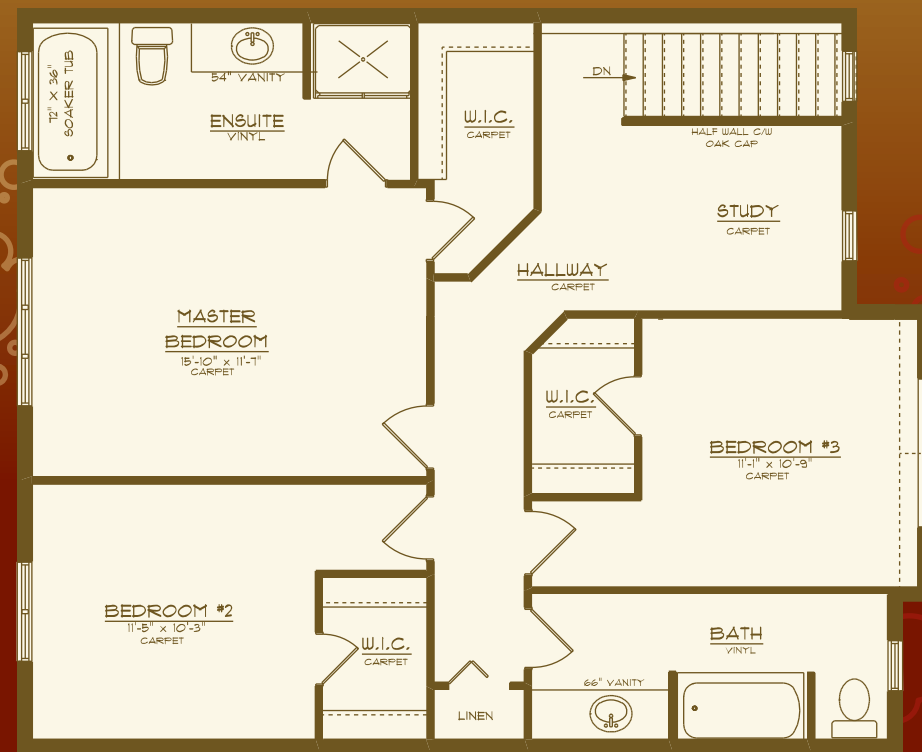


The Geddes 1,888 sq. ft.

AVON | WEST
STRATFORD



Main Floor
824 Sq. Ft.



Upper Floor
1,064 Sq. Ft.



All drawings are artist concepts of the final product and may be revised and/or improved as necessitated by Architectural controls. All floor plans are approximate dimensions. Floor areas shown include "open to below" but do not include garage or basement areas. E. & O. E.

www.bromberghomes.com